



MONTHLY MEMBERSHIP PROGRESS REPORT

District 19 I

Results as of: 06/30/2019

GMT: GORDON ZIEGLER

LOCATION WASHINGTON

GMT CA

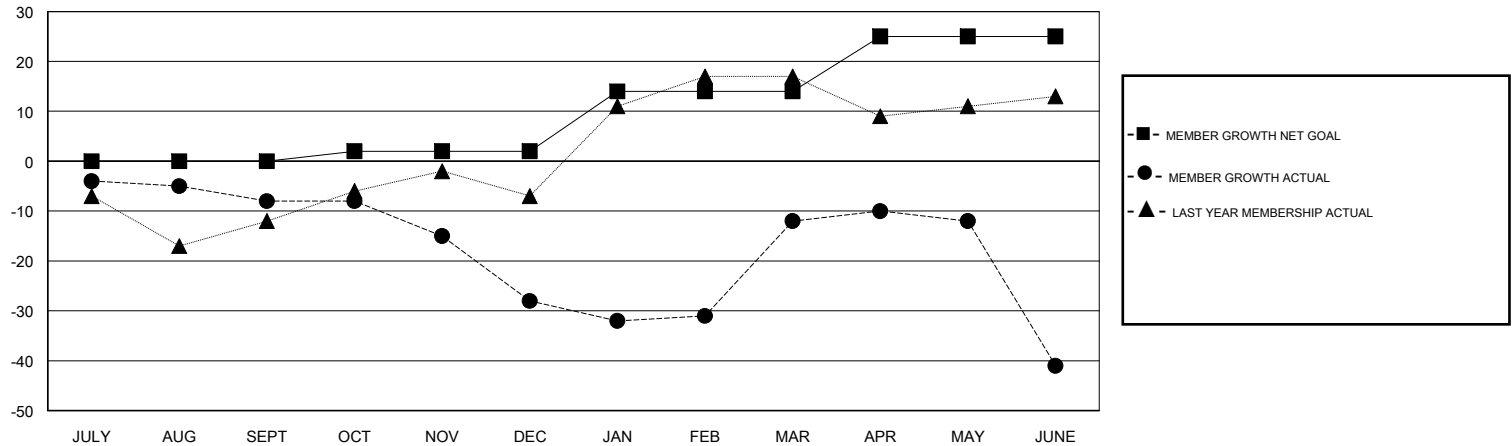
Clubs			
RESULTS FOR 2018-2019			
QUARTER	NEW CLUB GOAL	NEW CLUBS	DROPPED CLUBS
JULY/AUG/SEPT	0	0	0
OCT/NOV/DEC	0	0	0
JAN/FEB/MAR	0	0	0
APR/MAY/JUNE	0	0	0

Members			
RESULTS FOR 2018-2019			
QUARTER	MEMBER GROWTH NET GOAL	MEMBER GROWTH ACTUAL	DROPPED MEMBERS ACTUAL (including transfers)
JULY/AUG/SEPT	0	23	27
OCT/NOV/DEC	2	25	42
JAN/FEB/MAR	12	36	18
APR/MAY/JUNE	11	50	64

GOALS AND ACTUAL NEW CLUBS CUMULATIVE



GOALS AND ACTUAL MEMBERS CUMULATIVE



DROPPED CLUBS: 0	34 CLUBS OF 49 ADDED 1 OR MORE NEW MEMBERS	<u>GENDER DISTRIBUTION</u>	
DROPPED MEMBERS		MALE	782 (64.10%)
DECEASED	19	FEMALE	438 (35.90%)
CLUB CANCELLED	0	Women Percentage Fiscal Year Goal: 37%	
OTHER	132	TOTAL FAMILY UNIT MEMBERS	235
TOTAL	151	FAMILY MEMBERS PAYING HALF DUES	118

[CLICK HERE FOR CUMULATIVE MEMBERSHIP DATA](#)